



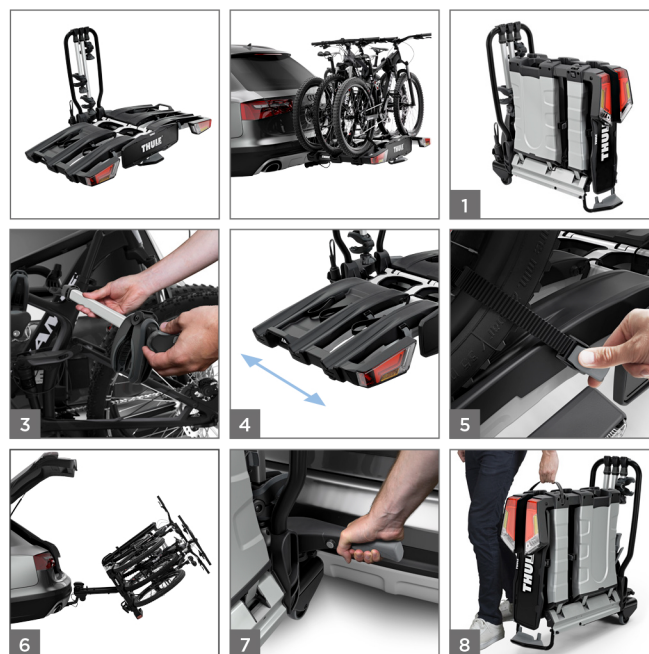
€ 899

NORMALE VERKOOPPRIJS € 1069,95



THULE
SWEDEN

THULE EASYFOLD XT



Thule EasyFold XT 934

The fully foldable, compact, and easy-to-use towbar-mounted bike rack for all types of bikes.

1. Fully foldable for convenient mounting, handling, and storage
2. High load capacity enabling transport of e-bikes and heavy mountain bikes
3. Easy mounting of bikes through detachable bike arms with Thule AcuTight torque limiter knobs that “click” when optimal torque is reached
4. Large distance between wheel holders enabling transport of sturdy bikes with large wheel bases
5. Adjustable pump buckles with extra-long wheel straps for easy fastening of wheels (up to 4.7” wheels) enabling transport of fat bikes
6. Easy trunk access even with bikes mounted, thanks to smart foot pedal tilt
7. Easy mounting and adjustment of the carrier before closing the tightening handle thanks to the towbar coupling’s initial stability
8. Ergonomic transport of the carrier thanks to the integrated carrying handles
9. Pre-assembled, no tools required
10. Lock your bikes to the bike carrier and your carrier to the towbar (locks included)

ARTIKEL NUMBER

934100

EAN CODE

7313020077369

ALIAS NUMBER

934

MAX NUMBER OF BIKES

3

MAX WEIGHT PER BIKE

30 kg

MAX LOAD

60 kg

PRODUCT WEIGHT

23,1 kg

FITS FRAME DIMENSIONS

22-80 mm

FITS WHEEL SIZES UP TO

4,7”

DISTANCE BETWEEN BIKES

22 / 19 cm

ELECTRIC CONNECTOR TYPE

13 pin

MEASURES (L X W X H)

FOLDED
83 x 31 x 86 cm

UNFOLDED

83 x 123 x 86 cm

CARTON DIMS (LENGTH X WIDTH X HEIGHT)

95 x 93 x 33 cm

CARTON WEIGHT

27,1 kg

PALLET DIMS (LENGTH X WIDTH X HEIGHT)

133 x 100 x 200 cm

PALLET WEIGHT

229,8 kg

PCS PER PALLET

8

ADDITIONAL ACCESSORIES / OPTIONS

- Thule EasyFold XT Foldable Loading Ramp 9334
Convenient foldable ramp for easy loading and unloading of your bikes.
- Thule EasyFold XT 3bike Carrying Bag 9344
Protects you and your car from dirt when transporting and storing the Thule EasyFold XT bike rack.
- Thule Carbon Frame Protector 984
An adapter to enable safe transport of bikes with carbon frames.
- Thule XXL Fat bike Wheel Straps 985
Extra long replacement wheel straps for fitting the biggest fat bike tyres and widest rims.
- Thule “One-Key-System”
Very practical if several lockable Thule products are used (e.g. box, roof rack, ski carrier etc.). All locking-barrels will be replaced so only one key will fit all products.
(544 = 4 cylinders + 2 keys, 596 = 6 cylinders + 2 keys, 588 = 8 cylinders + 3 keys, 452 = 12 cylinders + 4 keys).

